

# SARAH VAN NIEKERK

Doyenne of UK wood-engravers, she was born in 1934, schooled at Bedales and trained at both the Central School – under Gertrude Hermes R.A. (1901 – 83) – and the Slade (both in London). Over a period, she has been a tutor at the Royal Academy Schools, City & Guilds of London Art School, and West Dean College. Her record of exhibitions is too extensive to list, including some half dozen prizes to her name since 1989.

She is a Fellow of the Royal Society of Painter-Printmakers, the Society of Wood Engravers (Chair 1995 – 98) and the Royal West of England Academy, as well as being an Honorary Member of the Royal Birmingham Society of Artists. In 1994, she organised the touring exhibition 12 Wood Engravers.

With work in private and public collections the world over, she has been regularly commissioned by publishers for illustrations, most notably Oxford University Press, The Folio Society and the Readers' Digest Association. A monograph *The Engraver's Cut: Sarah van Niekerk* was published by Primrose Academy Press in 2000.

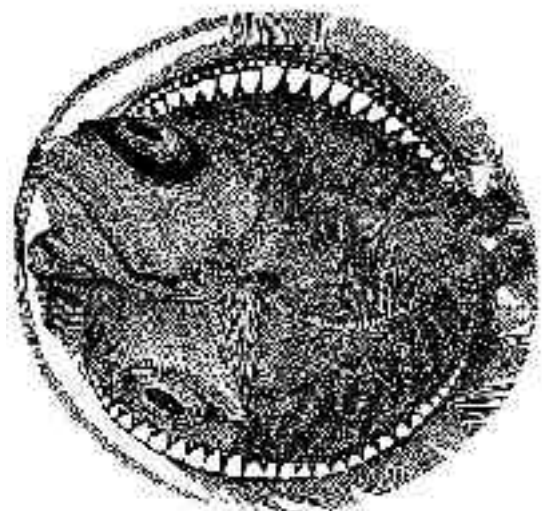
September

wood-engraving



John Dory

wood-engraving



The edition of this image is sold out and not available to view at Open Portfolio